



## VILLA D

These West-facing homes accommodate a large open-plan living and dining area that lead into the modular kitchen and a compact bedroom on the ground floor, a footprint coverage of approximately 1716 square feet. Take the stairs up to the first floor and you find yourself between the sizeable master bedroom and a second bedroom, both with en-suite bathrooms, as well as a neat balcony.







PHILIP





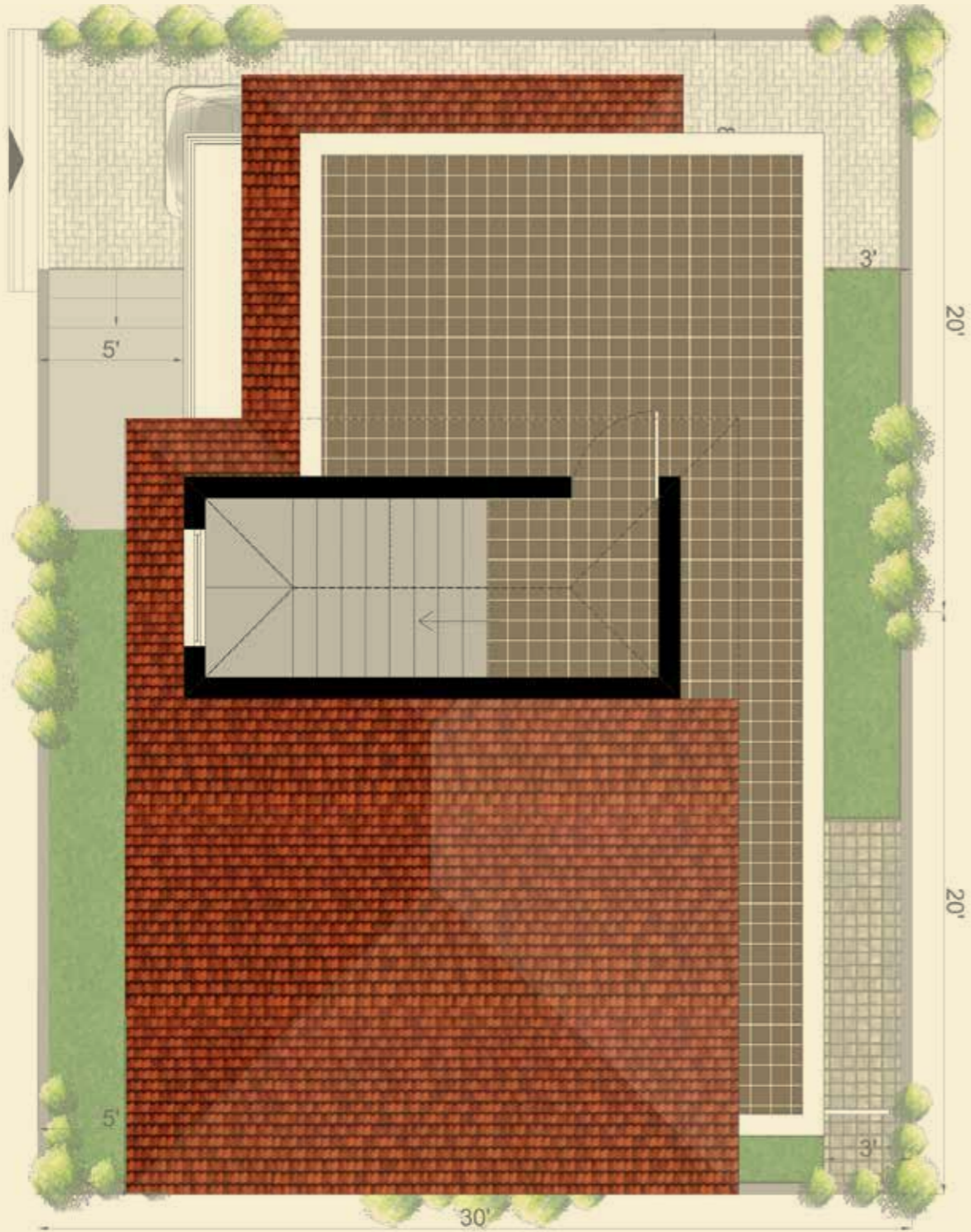
TYPE-D GROUND FLOOR



TYPE-D FIRST FLOOR



AREA STATEMENT	
TYPE	D
PLOT AREA	1200
CONSTRUCTION AREA	1716



TYPE-D TERRACE FLOOR



TYPE-D GROUND FLOOR



TYPE-D FIRST FLOOR

